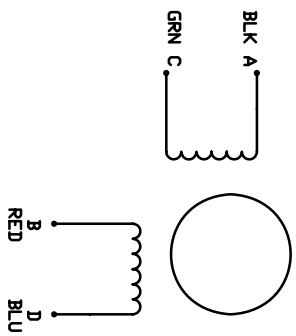


xxxxxxx

Wiring Diagram



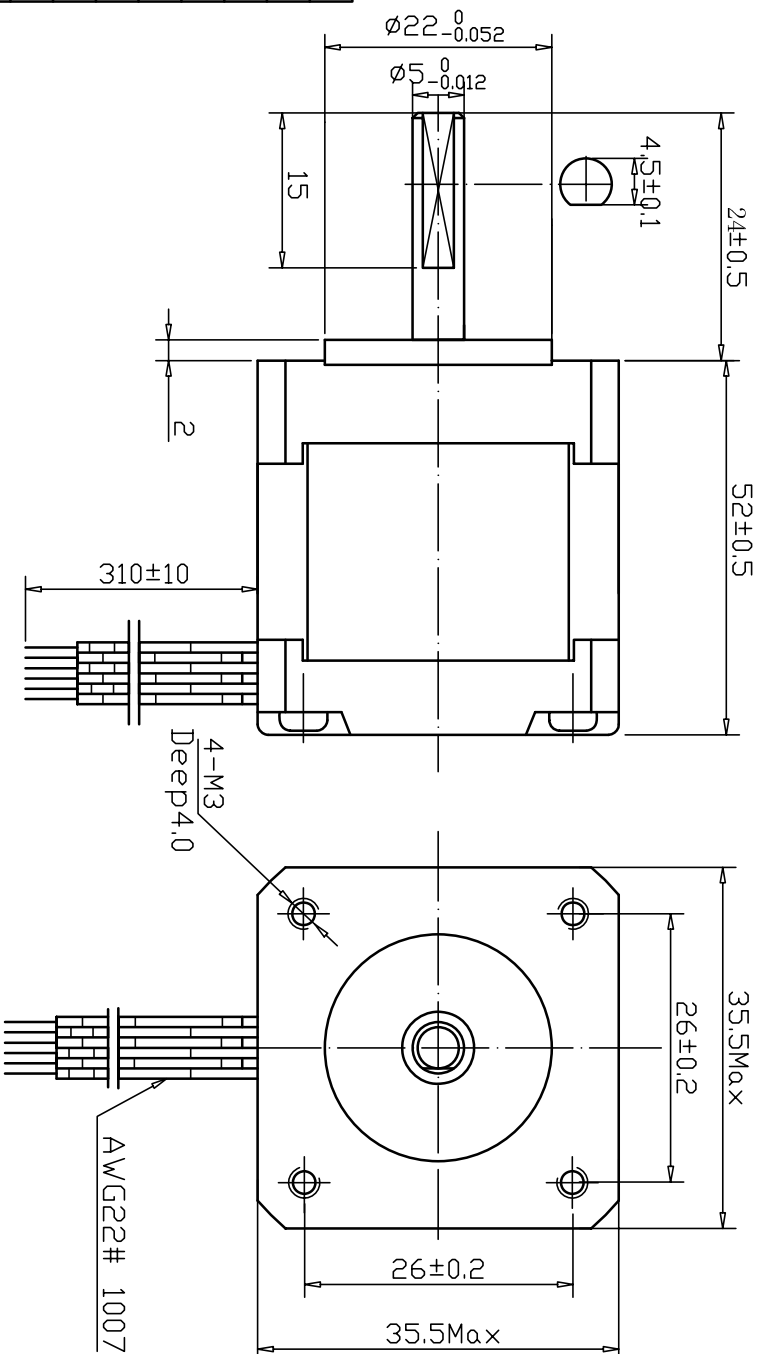
SPECIFICATIONS

| | | |
|----|-------------------------|---------------------|
| 1 | Number of Phase | 2 |
| 2 | Step Angle | 1.8° ±5% |
| 3 | Holding Torque | 40N.cm |
| 4 | Voltage | 4.2 VDC |
| 5 | Current | 1.5 A |
| 6 | Phase Resistance (20°C) | 2.8 ±10%Ω |
| 7 | Phase Inductance (1KHz) | 3.8±20%mH |
| 8 | Rotor Inertia | g • cm ² |
| 9 | Insulation Resistance | 100MΩ 500VDC |
| 10 | Insulation Class | B (130°C) |
| 11 | Ambient Temperature | -20°C to 50°C |
| 12 | Ambient Humidity | 15% to 95% |
| 13 | Motor Weight | Approx xx kg |
| 14 | | |

EXITING SEQUENCE (2 PHASE)

| STEP | A | B | A̅ | B̅ |
|------|---|---|----|----|
| 1 | + | + | - | - |
| 2 | - | + | + | - |
| 3 | - | - | + | + |
| 4 | + | - | - | + |

CW ← → CCW
 ↓ ↓



Unit:mm

First angle method



Tolerances for linear and angular dimensions without individual tolerance indications

GB/T 1804-m eqv ISO 2768-1:m

Geometrical tolerances for Features without individual tolerance indications

GB/T 1184-k eqv ISO 2768-2:k

DESIGN

CHECK

TECHNOLOGY

STANDARD

APPROVE

20150822

TYPE: HYBRID STEPPING MOTOR

SCALE: xx

Rev. 1.0

SHEET 1 OF 1

Model:

KL14H252-15-4A

REVISION RECORD

| REV. | REVISION RECORD | DATE | UNLESS OTHERWISE SPECIFIED | SIGNATURE | DATE |
|------|-----------------|----------|----------------------------|-----------|------|
| V1.0 | | 20150822 | | | |