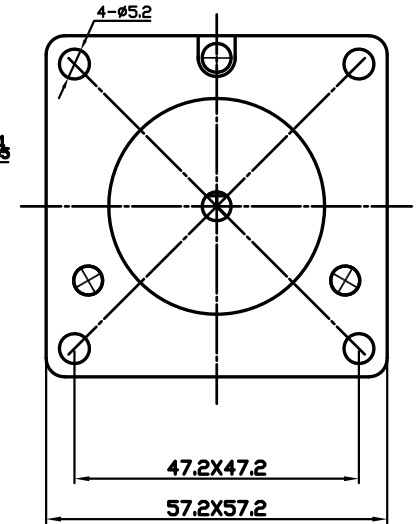
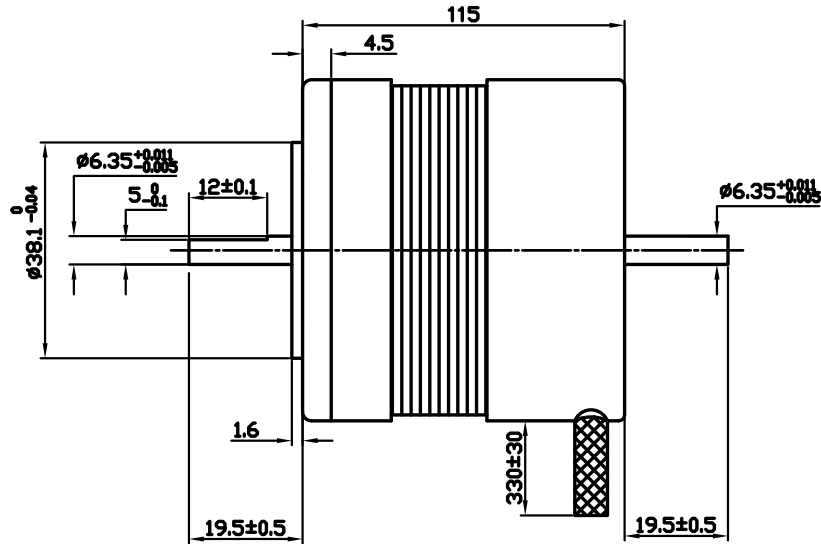
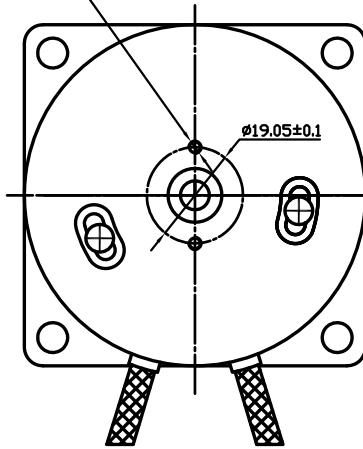


2-M2.5  
deep 1.5



MODEL	KL23BLS-115
Number of poles	4 poles
LINE TO LINE RESISTANCE	0.32ohms±7%
LINE TO LINE INDUCTANCE	1mH±20%
NOMINAL VOLTAGE	36V
NO LOAD SPEED	5400±250RPM
NO LOAD CURRENT	0.4A
RATED TORQUE	0.4N.m
RATED SPEED	4000±300RPM
BACK EMF	4.6Vrms/KRPM
TORQUE CONSTANT	0.063Nm/A
WEIGHT	1.25Kg
WIRE DIAGRAM	
UL1430 AWG20#	UL1430 AWG26#
PHASE U	HALL +5V
PHASE V	HALL 1
PHASE W	HALL 2
	HALL 3
	HALL GND
YEL	RED
RED	BLU
BLK	GRN
	WHT
	BLK

REV	ECN	NO	DESCRIPTION	DRN	APP'D	DATE	DESIGN	DATE	P/N.	
UNLESS OTHERWISE SPECIFIED							CHECK		TITLE	
TOLERANCES:									APPD	
DECIMALS: .x ±0.5							FIRST ANGLE PROJECTION	SCALE	USED ON	
ANGULAR: .xx ±0.25 ±0°30'										KL23BLS-115-B
.xxx ±0.1										DWG NO.
UNIT: mm									REV	
DO NOT SCALE DRAWING										
									Automation Technology	
							SHEET	OF		