

Keling Technology, Inc

417 Greenbriar Dr. Glendale Heights, IL 60139, USA

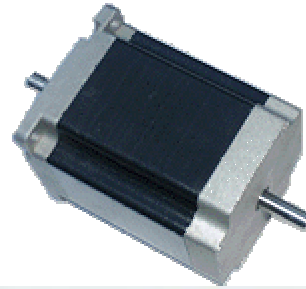
630-254-8655

WWW.kelinginc.net

630-545-1612 (Fax)

Email @ sale@kelinginc.net

NEMA 23, 34 HIGH TORQUE STEPPER MOTOR



Type	Connection type	Holding Torque ±10% Nm	Current Per phase A/phase	Voltage V DC	Resistance Per phase ±10% Ω/pase	Inductance (1KHz) ±20% mH/phase	Rotor inertia J Kg.m ²	Lead wires (Pin)
KL23H246-01EA	Bipolar(parallel)	0.64	3.0	1.3	0.43	1.09		8
	Bipolar(series)	0.64	1.5	2.6	0.72	4.36		
KL23H246-01EB	Unipolar	0.45	2.1	1.8	0.86	1.09		
KL23H255-01EA	Bipolar(parallel)	1.0	3.0	1.6	0.54	1.98		8
	Bipolar(series)	1.0	1.5	3.2	2.14	7.92		
KL23H255-01EB	Unipolar	0.7	2.12	2.26	1.07	1.98		
KL23H262-01EA	Bipolar(parallel)	1.28	3.0	1.86	0.62	2.1		8
	Bipolar(series)	1.28	1.5	3.72	1.46	8.4		
KL23H262-01EB	Unipolar	0.9	2.12	2.6	1.23	2.1		
KL23H276-	Bipolar(parallel)	2.0	3.0	2.46	0.82	3.8		8

01EA KL23H276- 01EB	Bipolar(series)	2.0	1.5	4.92	3.26	15.2		
	Unipolar	1.35	2.12	3.45	1.63	3.8		
KL34H260- 01A(B)	Bipolar	2.8	6.0	1.8	0.3	1.6		4
KL34H260- 02A(B)	Bipolar	2.8	3.0	3.6	1.2	6.4		4
KL34H260- 03EA	Bipolar(parallel)	2.8	4.2	2.4	0.57	3.13		8
	Bipolar(series)	2.8	2.1	4.8	2.28	12.5		
KL34H260- 03EB	Unipolar	2.0	3.0	3.4	1.14	3.13		
KL34H280- 01A(B)	Bipolar	4.2	6.0	2.4	0.4	3.4		4
KL34H280- 02A(B)	Bipolar	4.2	3.0	4.8	1.6	13.6		4
KL34H280- 03EA	Bipolar(parallel)	4.2	4.2	3.2	0.76	6.66		8
	Bipolar(series)	4.2	2.1	6.4	3.04	26.6		
KL34H280- 03EB	Unipolar	3.0	3.0	4.6	1.52	6.66		
KL34H2120- 01A(B)	Bipolar	8.2	6.0	3.3	0.55	6.2	4	
KL34H2120- 02A(B)	Bipolar	8.2	3.0	6.6	2.2	24.8	4	
KL34H2120- 03EA	Bipolar(parallel)	8.2	4.2	4.4	1.04	12.2	8	
	Bipolar(series)	8.2	2.1	8.8	4.16	48.8		
KL34H2120- 03EB	Unipolar	5.8	3.0	6.2	2.08	12.2		

NEMA 8, 11, 16, 17 HIGH TORQUE STEPPER MOTOR

Series Model	Step Angle (°)	Motor Length (mm)	Holding Torque (g.cm)	Lead Wire (NO.)	Rated Current (A)	Phase Resistance (ohm)	Phase Inductance (mH)	Rotor Inertia (g.cm ²)	Motor Weight (Kg)
KL8H28H-0504A	1.8	28	180	4	0.5	12.6	3.6		0.05
KL8H30H-0506A	1.8	30	180	6	0.5	11.5	1.33		0.06
KL8H33H-0604A	1.8	33	200	4	0.6	6.5	1.7		0.06
KL11H32H-0956A	1.8	31.5	430	6	0.95	2.8	1.0	9	0.11
KL11H32H-0674A	1.8	31.5	600	4	0.67	5.6	4.2	9	0.11
KL11H45H-0956A	1.8	44.5	750	6	0.95	3.4	1.2	12	0.14
KL11H45H-0674A	1.8	44.5	950	4	0.67	6.8	4.9	12	0.14
KL11H51H-0956A	1.8	50.5	900	6	0.95	4.6	1.4	18	0.2
KL11H51H-0674A	1.8	50.5	1200	4	0.67	9.2	5.7	18	0.2
KL14H20-04-04A	1.8	20	500	4	0.4	25		100	0.1
KL14H26-08-04A	1.8	26	500	4	0.8	4.8	3.0	150	0.14
KL14H28-075-04A	1.8	28	700	4	0.75	4.3	4.0	150	0.14
KL14H28-05-04A	1.8	28	1000	4	0.5	20		150	0.18
KL14H34-04-06A	1.8	34	1000	6	0.4	25		180	0.18
KL16H20-0404A	1.8	20	650	4	0.4	6.6	7.5	11	0.12
KL16H20-0506A	1.8	20	800	6	0.5	13	7.5	11	0.12
KL16H34-0654A	1.8	34	1800	4	0.65	7.0	9.3	20	0.18

KL16H34-0404A	1.8	34	2100	4	0.4	30	32	20	0.18
KL16H34-0604A	1.8	34	2200	4	0.6	15	16	20	0.18
KL16H34-0306A	1.8	34	1300	6	0.3	40	20	20	0.18
KL16H34-0166A	1.8	34	1100	6	0.16	30	30	20	0.18
KL16H38-0504A	1.8	38	2900	4	1.68	75	50	24	0.2
KL16H38-0806A	1.8	38	2000	6	0.8	7.5	6	24	0.2
KL16H44-0304A	1.8	44	2800	4	0.3	40	100	40	0.25
KL17H130H-01A	1.8	33	1.58	6	0.95	4.2	2.5	35	0.22
KL17H130H-02A	1.8	33	1.58	6	0.4	24	15	35	0.22
KL17H130H-03A	1.8	33	1.58	6	0.31	38.5	21	35	0.22
KL17H130H-04A	1.8	33	2.2	4	1.33	2.1	2.5	35	0.22
KL17H150H-01A	1.8	38	2.59	6	1.2	3.3	3.2	54	0.28
KL17H150H-02A	1.8	38	2.59	6	0.8	7.5	6.7	54	0.28
KL17H150H-03A	1.8	38	2.59	6	0.4	30	30	54	0.28
KL17H150H-04A	1.8	38	3.6	4	1.68	1.65	3.2	54	0.28
KL17H185H-01A	1.8	47	3.17	6	1.2	3.3	2.8	68	0.35
KL17H185H-02A	1.8	47	3.17	6	0.8	7.5	6.3	68	0.35
KL17H185H-03A	1.8	47	3.17	6	0.4	30	25	68	0.35
KL17H185H-04A	1.8	47	4.4	4	1.68	1.65	2.8	68	0.35
KL17H130HM-01A	0.9	33	1.58	6	0.95	4.2	4	35	0.22
KL17H130HM-02A	0.9	33	1.58	6	0.6	10	9.5	35	0.22
KL17H130HM-03A	0.9	33	1.58	6	0.31	38.5	3.3	35	0.22
KL17H130HM-04A	0.9	33	2.2	4	1.33	2.1	4.2	35	0.22
KL17H150HM-01A	0.9	38	2.59	6	1.2	3.3	4.0	54	0.28
KL17H150HM-02A	0.9	38	2.59	6	0.8	7.5	6.7	54	0.28
KL17H150HM-03A	0.9	38	2.59	6	0.4	30	30	54	0.28
KL17H150HM-04A	0.9	38	3.6	4	1.68	1.65	3.2	54	0.28
KL17H185HM-01A	0.9	47	3.17	6	1.2	3.3	4	68	0.35
KL17H185HM-02A	0.9	47	3.17	6	0.8	7.5	10	68	0.35
KL17H185HM-03A	0.9	47	3.17	6	0.4	30	38	68	0.35
KL17H185HM-04A	0.9	47	4.4	4	1.68	1.65	4.1	68	0.35
KL17H34H-0954DA	3.6	34	530	4	0.095	98	170	20	0.20
KL17H38H-0954DA	3.6	38	700	4	0.095	105	330	23	0.23