

350W Single Output Switching Power Supply

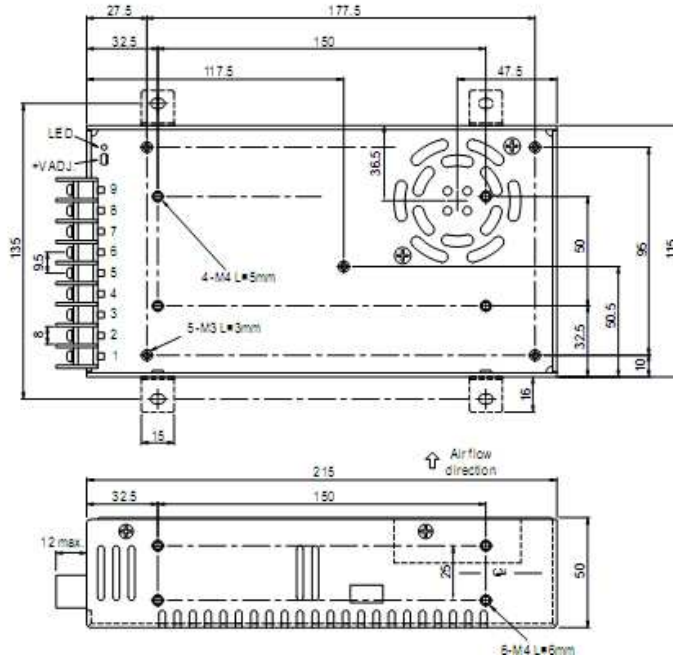
- AC input range selectable by switch
- Protections: Short circuit / Overload /
Over voltage / Over temp.
- Forced air cooling by built-in DC fan
- Fixed switching frequency at 25KHz
- Cooling fan ON/OFF auto control
- 1 year warranty



230x 115x 50 mm

AC input voltage range 90~132VAC / 180~264VAC selectable by switch
AC inrush current Cold start, 25A at 115VAC, 50A at 230VAC
DC adjustment range $\pm 10\%$ rated output voltage
Overload protection 105%~145% hiccup mode, auto-recovery
Setup, rise, hold up time ... 200ms, 50ms, 20ms at full load and 230VAC
Withstand voltage I/P-O/P:1.5KVAC, I/P-FG:1.5KVAC, 1minute
Working temperature 0~50 °C (refer to output derating curve)
Safety standards Design refer to UL1950
EMC standards Design refer to FCC part 15 J
Connection 9P/ 9.5mm pitch terminal block
Packing 1.15kg ; 17pcs / 20.5kg / 1.25CUFT

Mechanical Specification



Terminal Pin No. Assignment

Pin No.	Assignment	Pin No.	Assignment
1	AC/L	4-6	DC OUTPUT -V
2	AC/N	7-9	DC OUTPUT +V
3	FG		

Block Diagram

