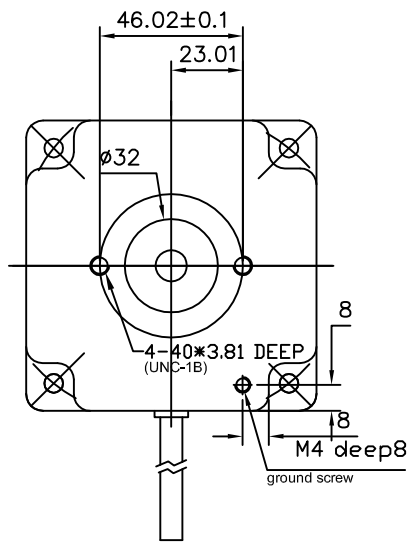
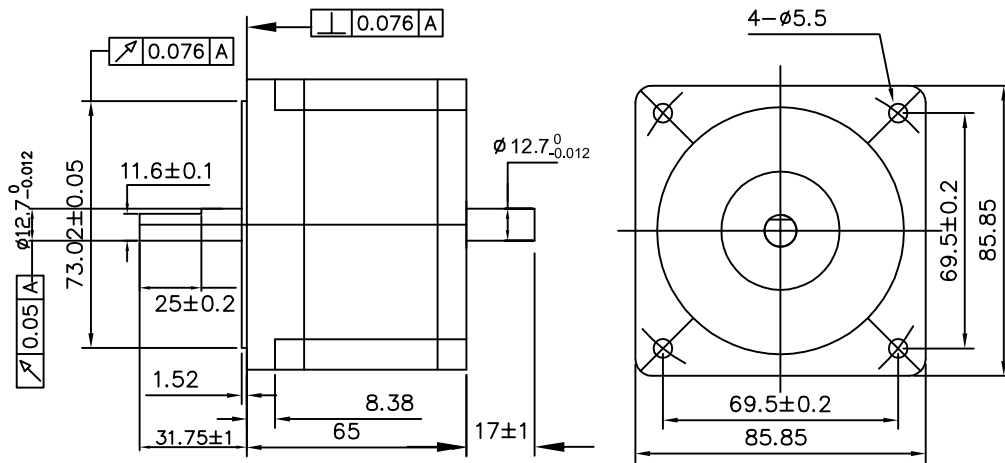


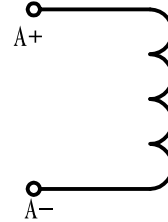
Hybrid Stepper Motor

KL34H265-60-4B

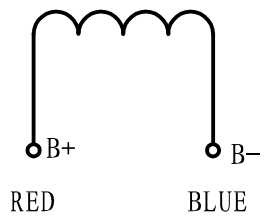
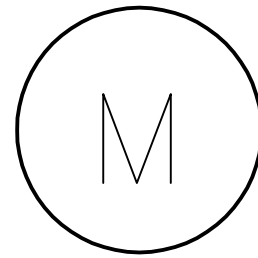
UNIT=MM:



BLACK



GREEN



RED

BLUE

1430-AWG18#LENGTH310mm

PHASE	STEP ANGLE	CURRENT	RESISTANCE	INDUCTANCE	HOLDING TORQUE	ROTOR INERTIA	WEIGHT
	DEG/STEP	A	ohms	mH	OZ-IN	gcm ²	Kg
2	1.8	6.0	1.7	6	465	1000	1.7