

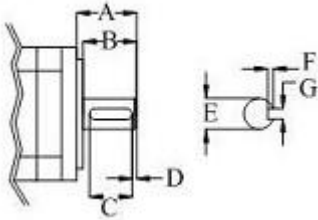
Item	Unit Of Measure	Value
Rated Power	Kw.	0.75
	HP	1
Peak Torque	N.m	7.162
	oz. In	1010
	In. Lb	63.4
	Ft. Lb	5.28
Rated Revolutions	RPM	3000
Required Power	V	220
Encoder	C.P.R.	2500 Standard (500 optional)



Package includes: (1) AC Brushless Servo Motor, (1) Servo driver, (1) 2 meter Power cord from the drive to the motor, (1) 2 meter encoder cable from the drive to the motor, (1) male 37 pin / CN1 connector to connect your interface. Soldering is required at this time on the connector

### 37 Pin / CN 1 user interface connection

#### MOTOR CONFIGURATION



DIM	MM type	IN type
A	41mm	1.62"
B	38mm	1.50"
C	30mm	1.19"
D	2mm	0.08"
E	12.5mm	0.5"
F	4mm	0.095"
G	6mm	0.188"

