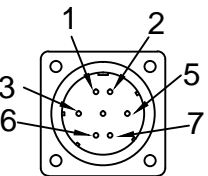
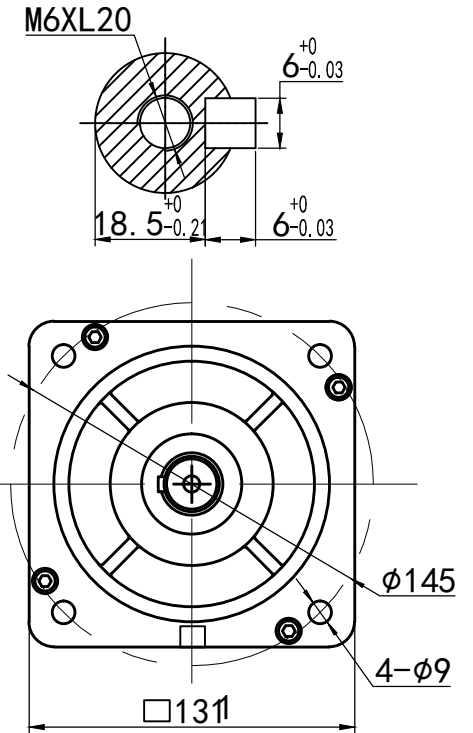
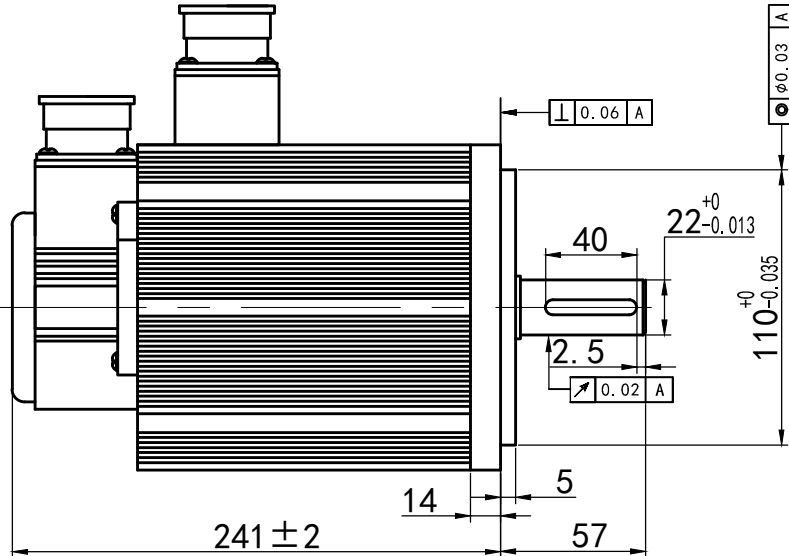
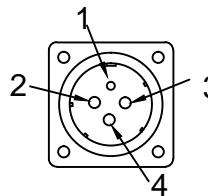


Rated Voltage (Vac)	200-220
Rated Power (w)	2000
Rated Torque (N.m)	7.7
Peak Torque (N.m)	22
Rated Speed (rpm)	2500
Peak Speed (rpm)	3000
Rated Current (Arms)	7.5
Peak Current (Arms)	22
Torque Const (N.m/Arms)	1.03
Back EMF Const (V/krpm)	68
Resistance (Ω)	1.01
Inductance (mH)	2.94
Inertia (kg*m ² *10 ⁻⁴)	5.3
Poles	8
Encoder type	23 bit absolute
IP rating	IP65
Mass (Kg)	8.3



Wiring Order of Absolute Encoder Connector							
Position	1	2	3	4	5	6	7
Signal	PE	5V	0V	SD+	SD-	BAT+	BAT-
Color							



Winding Connection				
Position	1	2	3	4
Signal	PE	U	V	W
Color				

Motor Side Connector			
Connector	Winding Connector	Encoder Connector	Brake Connector
Part Num	YD28J4Z	YD28J7Z	

Driver Side Connector			
Connector	Winding Connector	Encoder Connector	Brake Connector
Part Num	LS-YDA28K4TS-01	LS-YDA28K7TS-01	

ELM2000LM130F-H
 130mm,middle inertia,2000w servo motor
 23bit absolute encoder