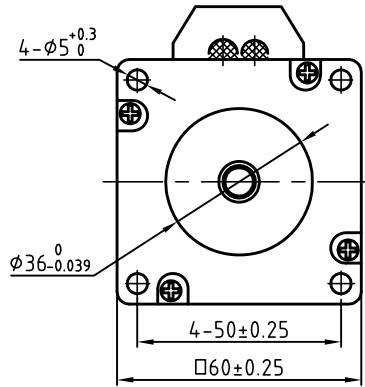
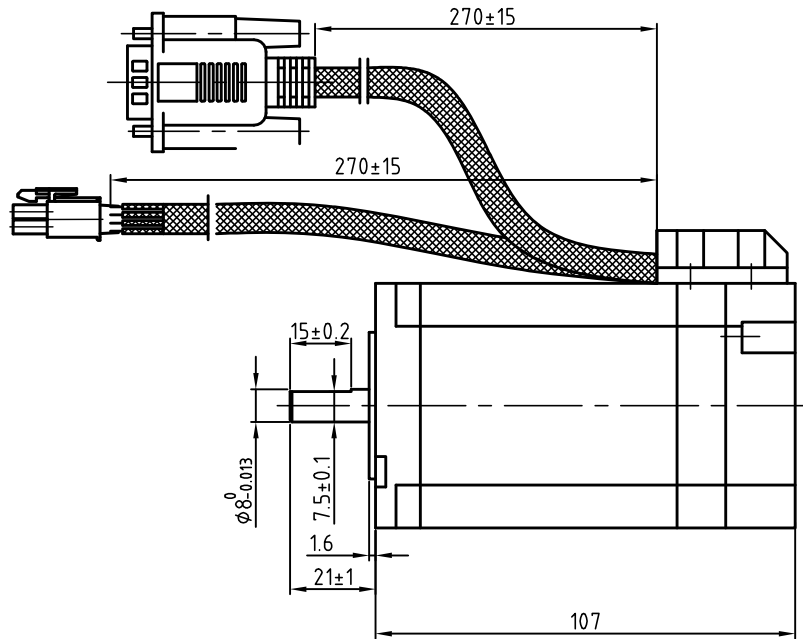
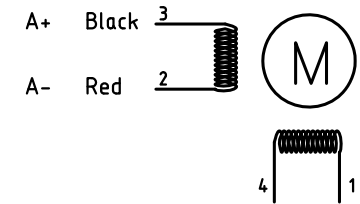
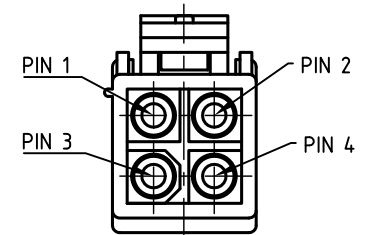


Dimension: (Unit: mm)

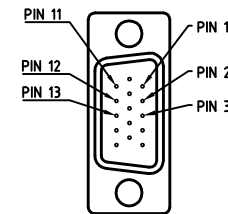


Motor Connctions:



B+ Yellow B- Green

Encoder Signals



PIN	1	2	3	11	12	13
Color	BLK	RED	WHT	YEL	GRN	BLU
Define	A+	VCC	GND	B+	B-	A-

Common Rating

Step angle	1.8°
Position accuracy	1.8±0.09°
Dielectric strength	500VAC 1min
Insulation resistance	100M0hm(500VDC)
Insulation class	B
Temp rise(Max)	80K
Radial play	Max.0.02mm(Load 450g)
Axial play	Max.0.08mm(Load 900g)

Specification

Current/phase	5.0 A
Voltage	2.3 V
DC Resistance/phase ±10%	0.46Ω
Inductance/phase ±20%	2.0 mH
Holding torque	3.0 N•M
Inertia	0.69 kg•cm ²
Weight	1.5 kg
Encoder resolution	1000 cpr

Designed						
Checked			First Angle projection		Title	Closed-loop Stepper Motor
Approved			Weight	Scale	Stage Mark	CS-M22430
Part No.			Sheet 1 of 1			

KL24H30N-1000 RMS 5.0A

— 24VDC

— 36VDC

— 48VDC

