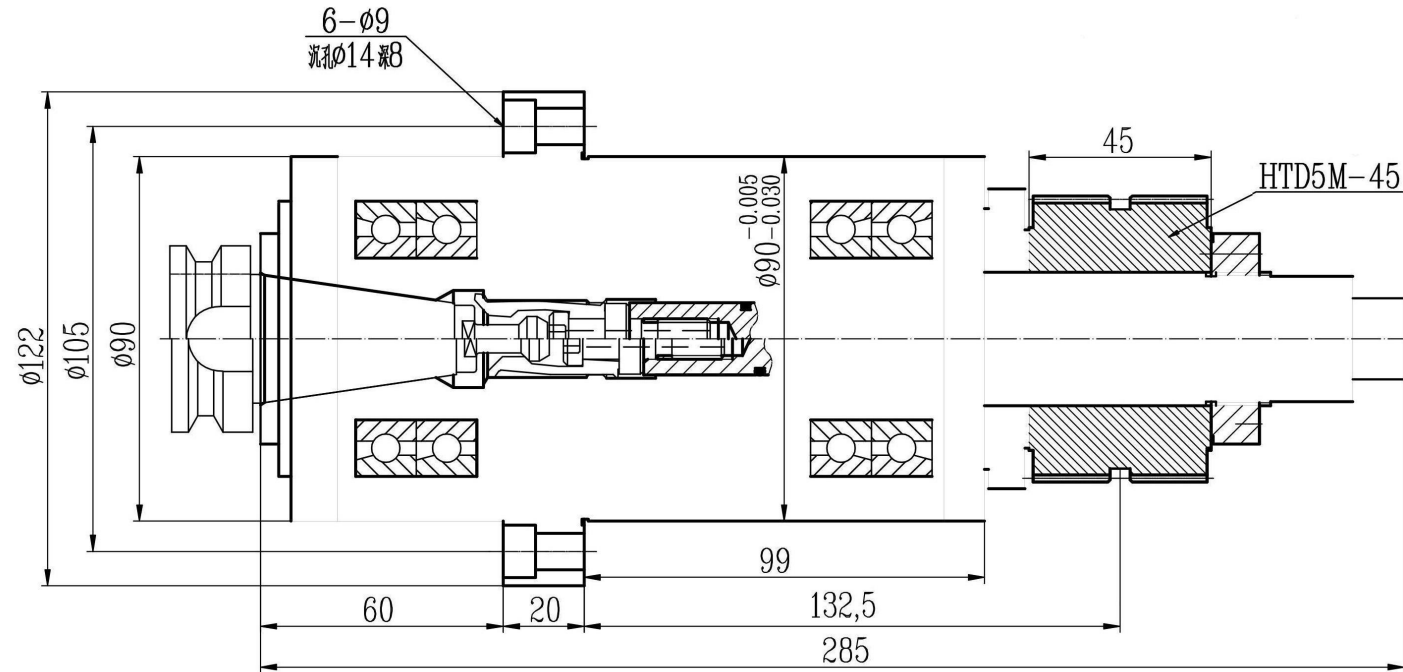


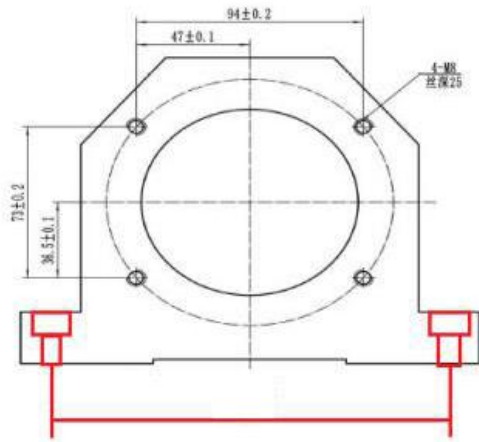
BT30 OD90mm 6000rpm ATC belt driving spindle



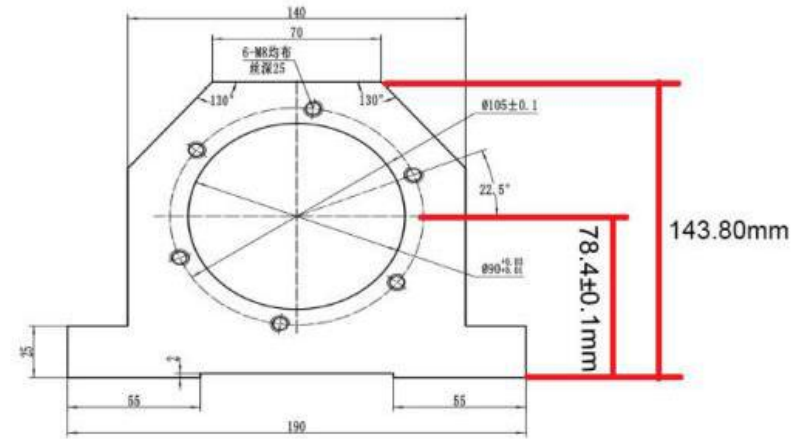
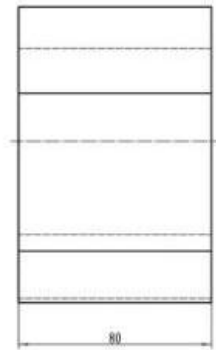
Technical requirement:

1. Front interface: BT30, has end-face key.
2. Broach force 300 KG, unclamping force 700 KG, unclamping travel 4.5mm.
3. Lubrication: oil grease. Cooling type: nature cool.
4. Bearing: 7008C Max speed: 6000rpm.
5. Dynamic balance precision G1.
6. Static precision: front taper beat ≤ 0.003 mm.
7. Front taper checked by method of coloring, and interface $\geq 80\%$, and near big end.
8. Installment: vertical, front end down.

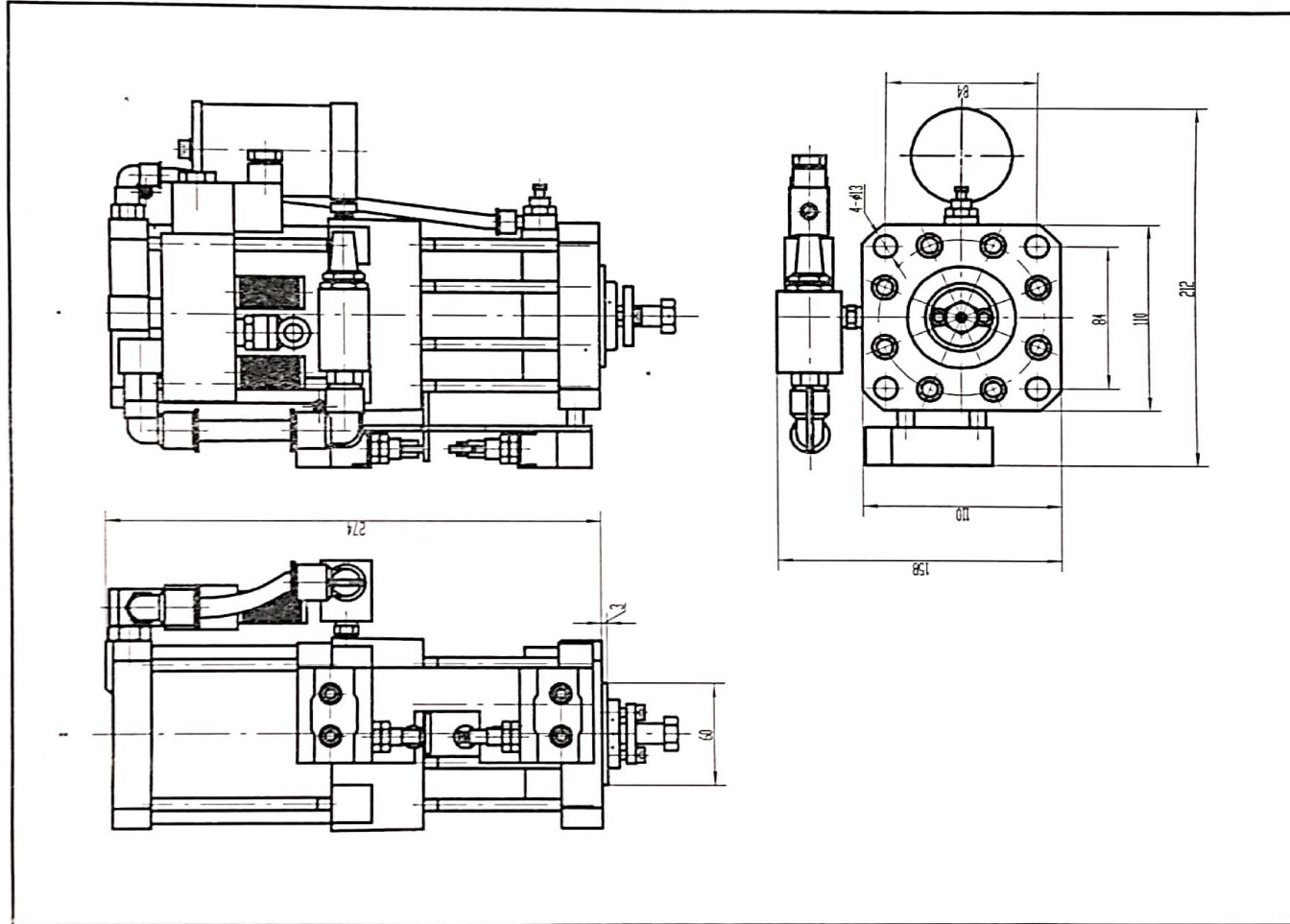
Spindle bracket



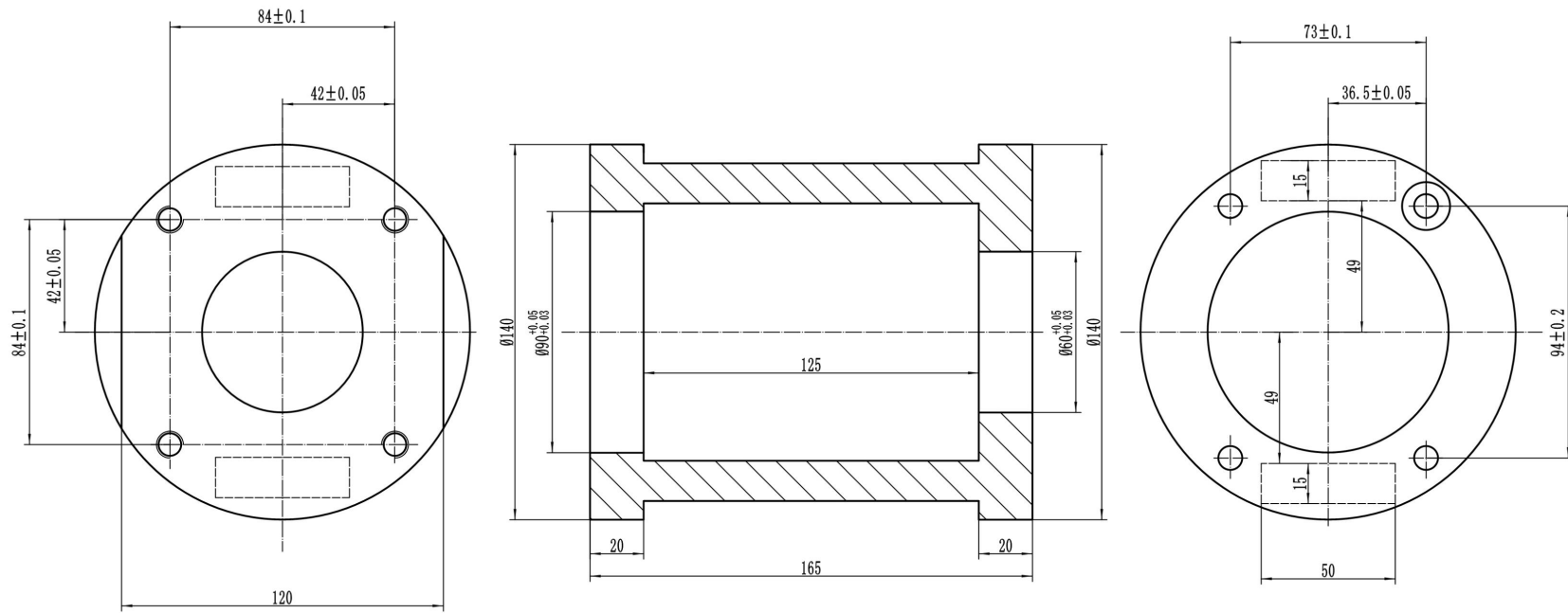
you can drilling as your required.



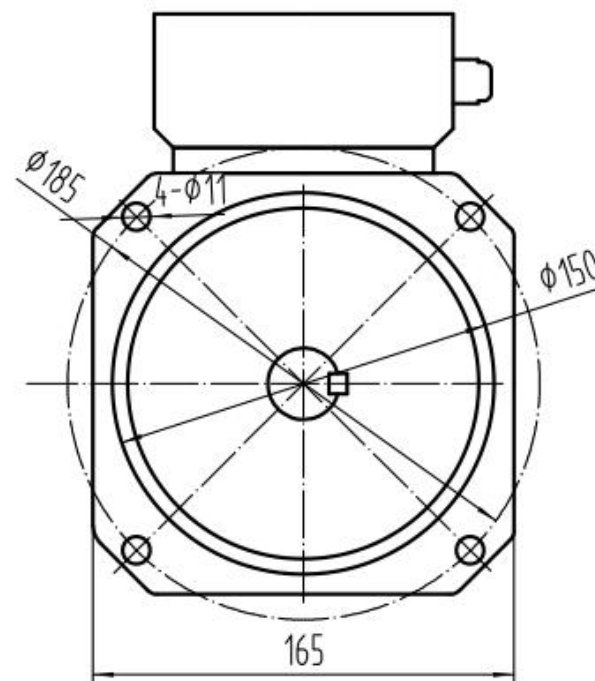
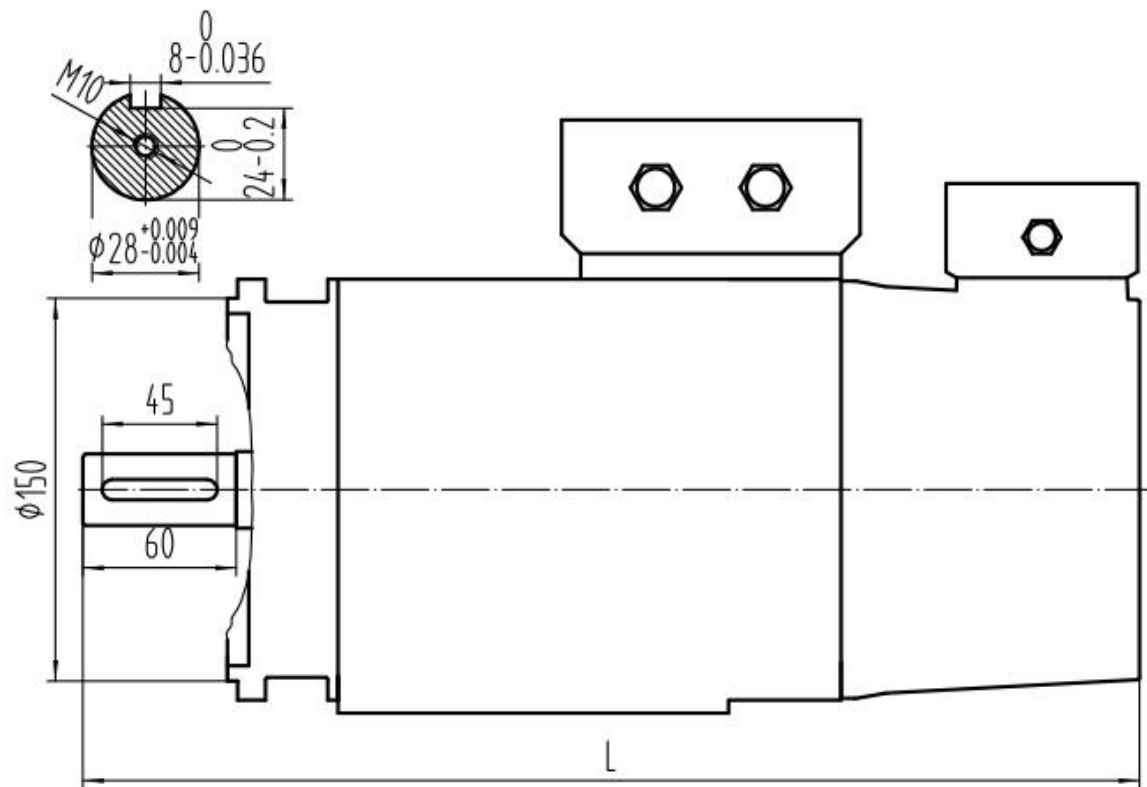
2.0T pneumatic cylinder



Pneumatic cylinder frame



2.2kw 6000rpm motor
(L=380mm)



Pulley & belt



Spindle pulley : 45Teeth