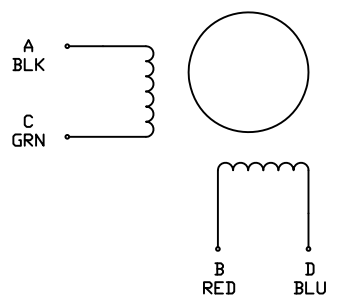


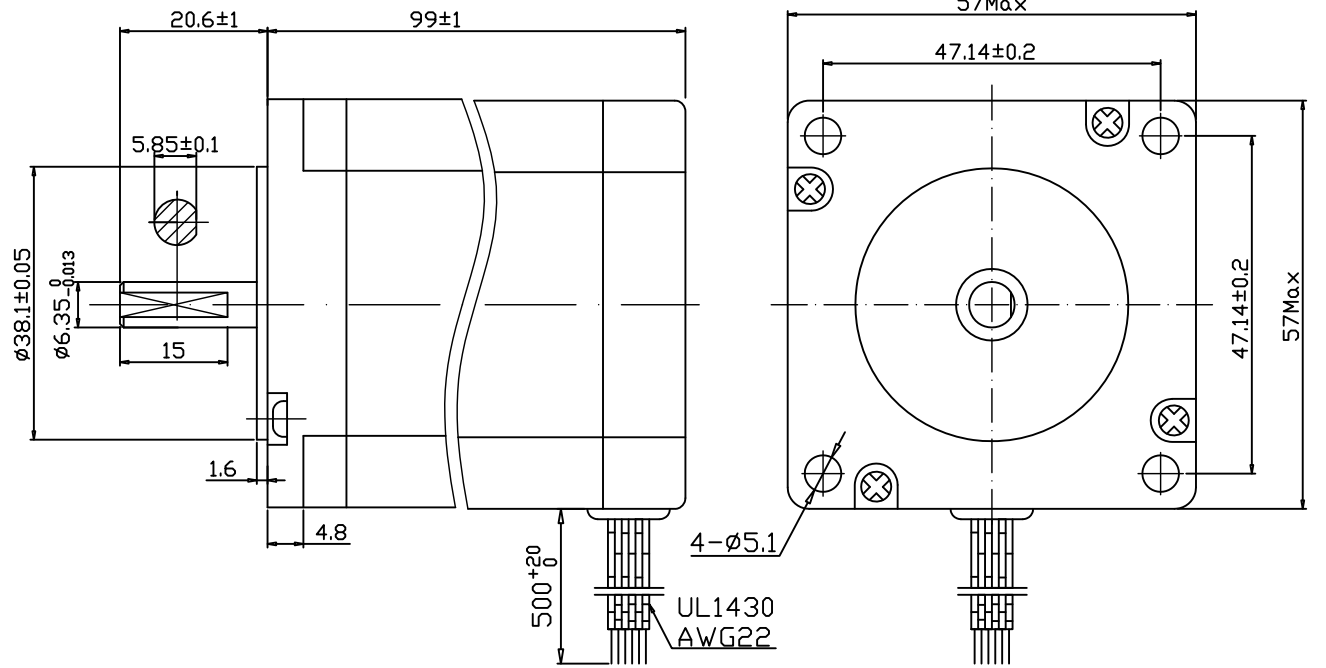
A B C D E F G H

Wiring Diagram



SPECIFICATIONS

1	Number of Phase	2
2	Step Angle	0.9° ±5%
3	Holding Torque	21.5 kg. cm
4	Voltage	2.56VDC
5	Current	3.5A
6	Phase Resistance (20°C)	0.75 ± 10% Ω
7	Phase Inductance (1KHz)	3.2 ± 20% mH
8	Rotor Inertia	g · cm ²
9	Insulation Resistance	100M Ω 500VDC
10	Insulation Class	B (130°C)
11	Ambient Temperature	-20°C to 50°C
12	Ambient Humidity	15% to 95%
13	Motor Weight	Approx xx kg
14		



EXITING SEQUENCE (2 PHASE)

STEP	A	B	\bar{A}	\bar{B}	CCW
1	+	+	-	-	↑
2	-	+	+	-	↑
3	-	-	+	+	↑
4	+	-	-	+	↑

CW ↓

			Unit:mm	DESIGN				
			First angle method	CHECK				
			Tolerances for linear and angular dimensions without individual tolerance indications GB/T 1804-m eqv ISO 2768-1:m	TECHNOLOGY				
			Geometrical tolerances for features without individual tolerance indications GB/T 1184-k eqv ISO 2768-2:k	STANDARD			TYPE: HYBRID STEPPING MOTOR	SCALE XX Rev. 1.0 SHEET 1 OF 1
V1.0	HTPS1603211	20160322		APPROVE			Model: KL23H2100-35-4A(0.9)	
REV.	REVISION RECORD	DATE	UNLESS OTHERWISE SPECIFIDE	NAMES	SINGATURE	DATE		

A B C D E F G H