

Connection of Laser Machine Setup

There are two kinds of cable in the box come with the machine:

Ethernet

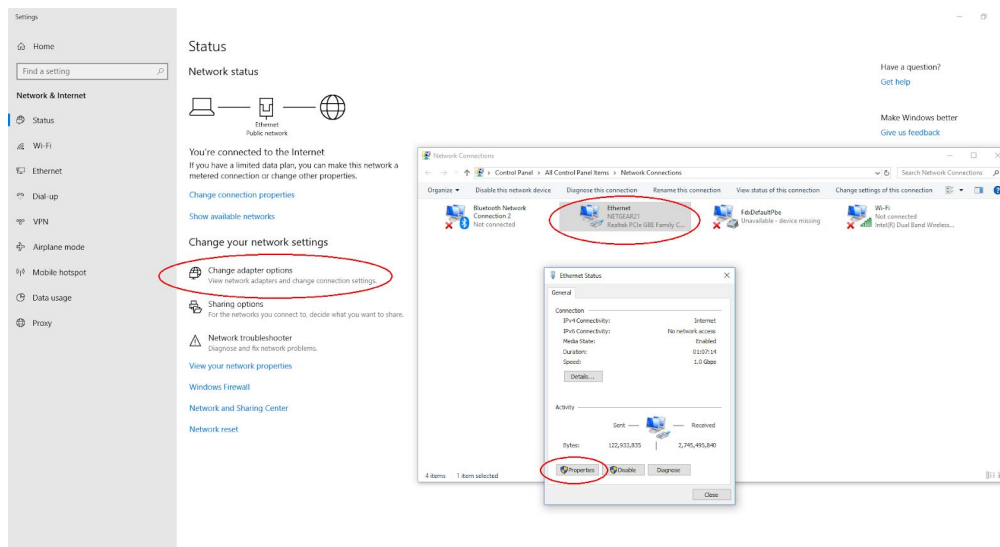


USB

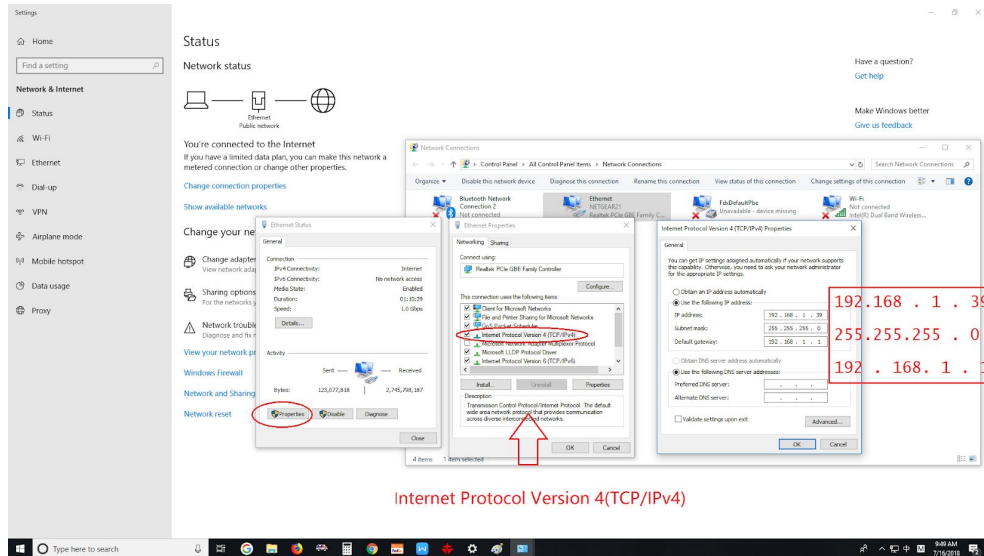


- **Ethernet Cable**

The IP address need to be changed. Use ESS cable connect your machine to your computer. Setup with following steps:

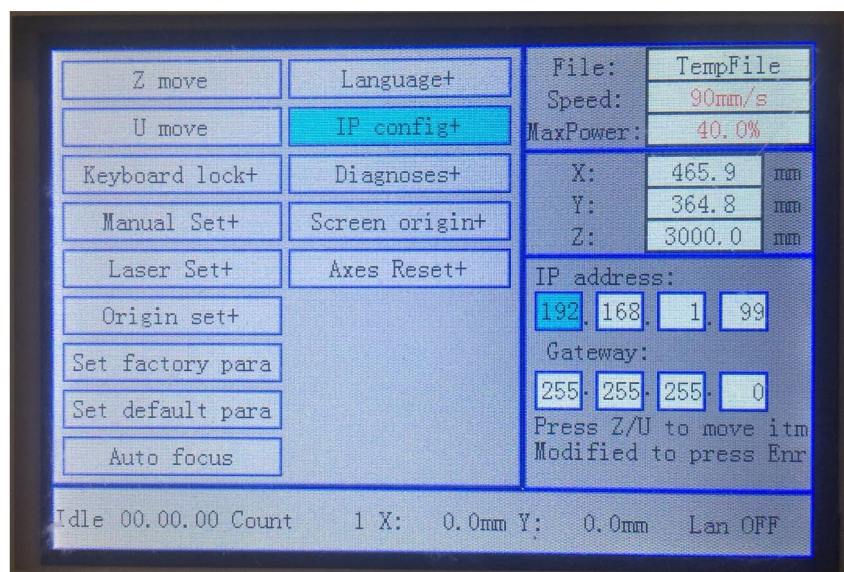
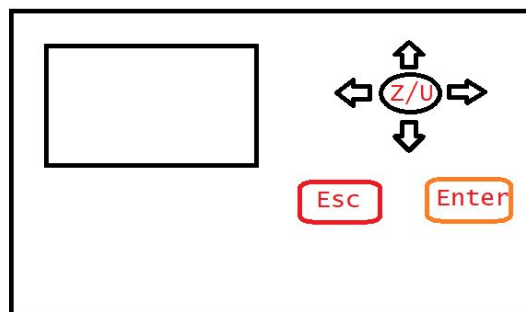


- Open Network & Internet settings
- Open Change adapter options
- Go to Ethernet Properties.
- Double click "Internet Protocol Version 4(TCP/IPv4)"



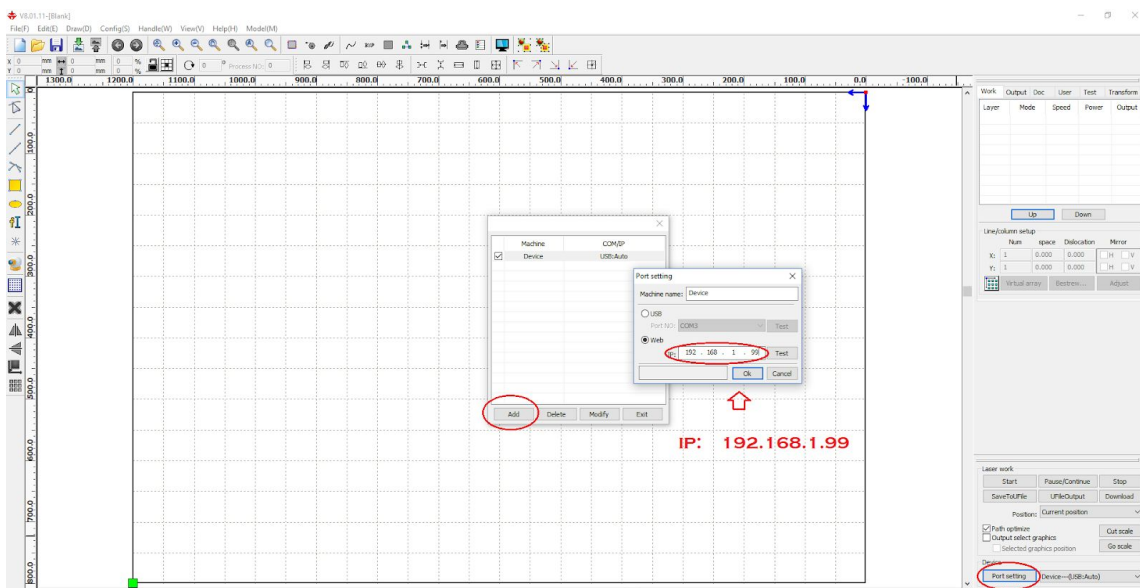
Internet Protocol Version 4(TCP/IPv4)

- e. Check " Use the following IP address "
- f. IP address : 192 . 168 . 1 . 39
Subnet Mask : 255 . 255 . 255 . 0
Default gateway: 192 . 168 . 1 . 1 "
- g. Click "ok" to save settings.
- h. Go to the machine and press the "Z/U" button .

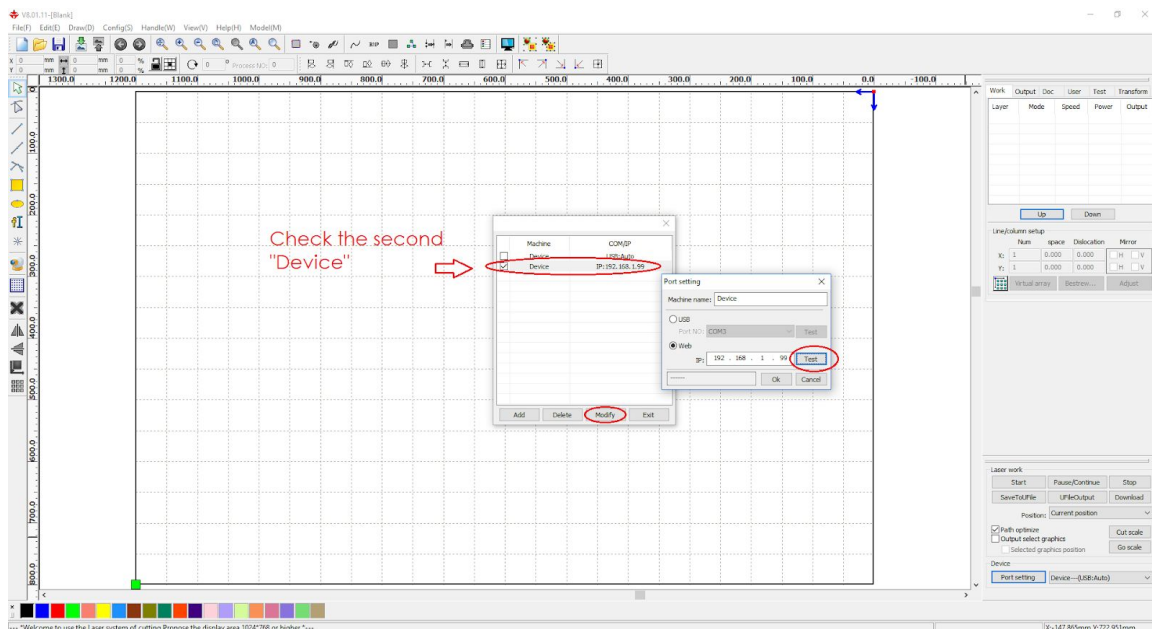


i. Press " ↓ " and scroll to "IP config+ " and enter
 " IP address: 192 . 168 . 1 . 99 Gateway: 255 . 255 . 255 . 0 "

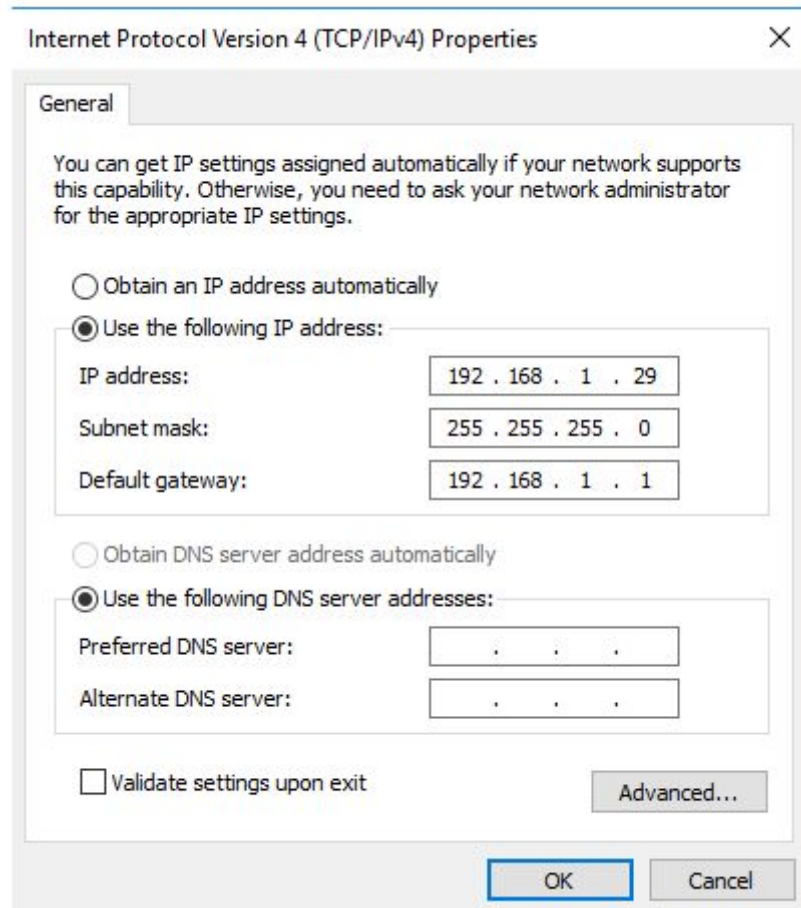
j. Open the software "RDworksV8"



k. Open Prot Setting, add a new device and type in " 192 . 168 . 1 . 99"
 (This IP address should be the same as machine's IP address)
 l. Click "ok" to save .



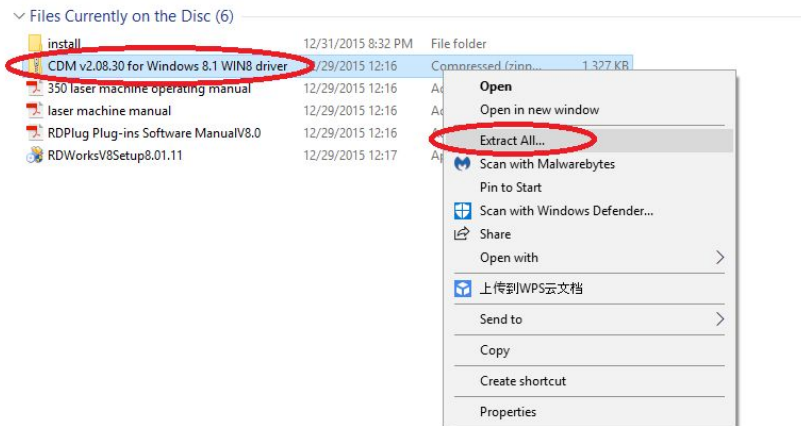
- m. Check "✓" the new device which we just did, click "modify" and click test.
- n. If it is failure, need to rechange the Ethernet IP address in your computer.



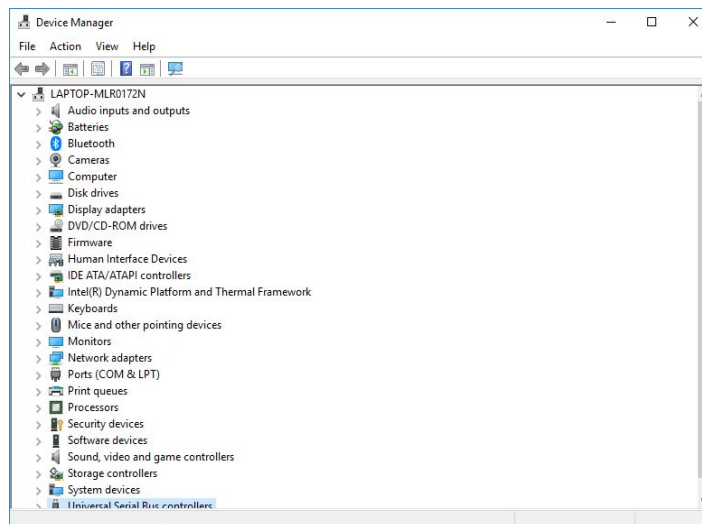
- o. Change the last number(39) to 29 and test it again in the software.
(If it still fail the testing, please try more numbers which lower than 40)

- USB Cable

The driver need to be updated. Use USB cable connect your machine to your computer and then setup with following steps.



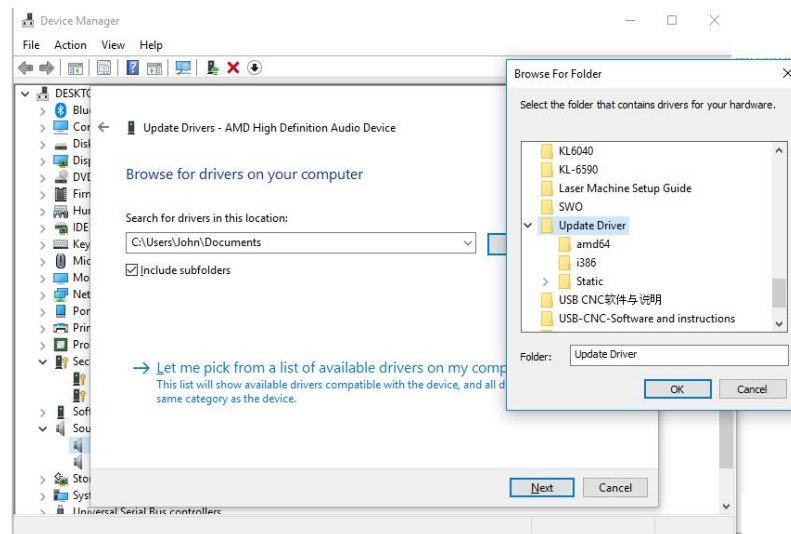
- Extract the ZIP folder in the disk to your computer



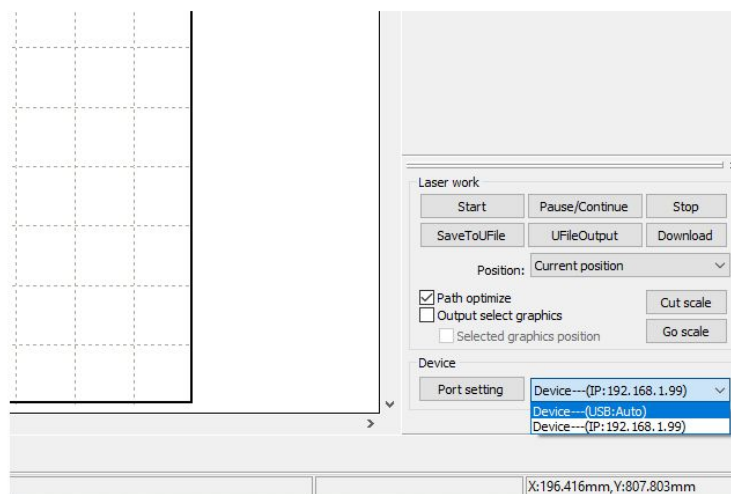
- Open Device Manager and find "Ports(Com & LPT) "

c. Right click "USB Serial Port (COM4)" and click "update driver"

→ Browse my computer for driver software
Locate and install driver software manually.



- d. Choose "Browse my computer for driver software"
e. Search out the folder with drivers and start updating.
f. After finish updating go to the software and choose the device which is "USB: Auto"



g. Click "Port setting" to test it.