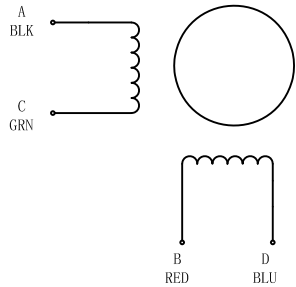


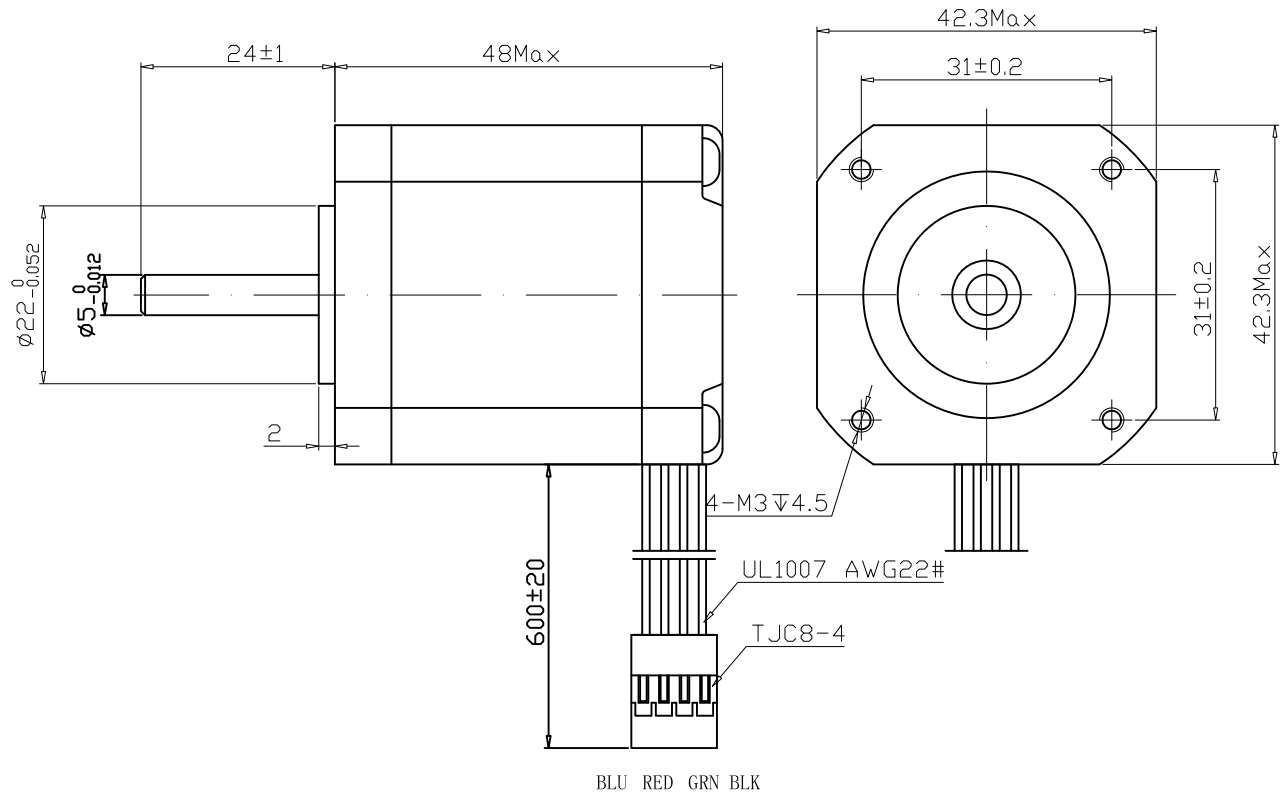
A B C D E F G H

Wiring Diagram



SPECIFICATIONS

1	Number of Phase	2
2	Step Angle	1.8°
3	Holding Torque	4.8 kg.cm
4	Voltage	3.1 VDC
5	Current	2.5 A
6	Phase Resistance (20°C)	1.25 Ω
7	Phase Inductance (1KHz)	1.8mH
8	Rotor Inertia	76g • cm <sup>2</sup>
9	Insulation Resistance	100MΩ 500VDC
10	Insulation Class	B ( 130°C )
11	Ambient Temperature	-20°C to 50°C
12	Ambient Humidity	15% to 95%
13	Motor Weight	Approx xx kg
14		

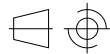


EXITING SEQUENCE (2 PHASE)

STEP	A	B	$\bar{A}$	$\bar{B}$	CCW
1	+	+	-	-	↑
2	-	+	+	-	
3	-	-	+	+	
4	+	-	-	+	↓

Unit:mm

First angle method



Tolerances for linear and angular dimensions without individual tolerance indications  
GB/T 1804-m eqv ISO 2768-1:m

Geometrical tolerances for features without individual tolerance indications  
GB/T 1184-k eqv ISO 2768-2:k

DESIGN	
CHECK	
TECHNOLOGY	
STANDARD	
APPROVE	
NAMES	SINGATURE
	DATE

TYPE: HYBRID STEPPING MOTOR SCALE xx Rev. 1.0 SHEET 1 OF 1

Model: KL17H248-25-4A

6	V2.0	HTPS1708073	20170807
	V1.0	HTPS1707311	20170731
	REV.	REVISION RECORD	DATE

A B C D E F G H