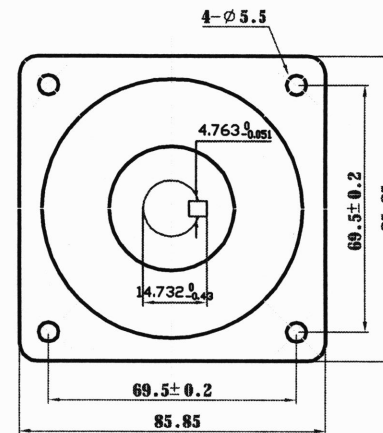
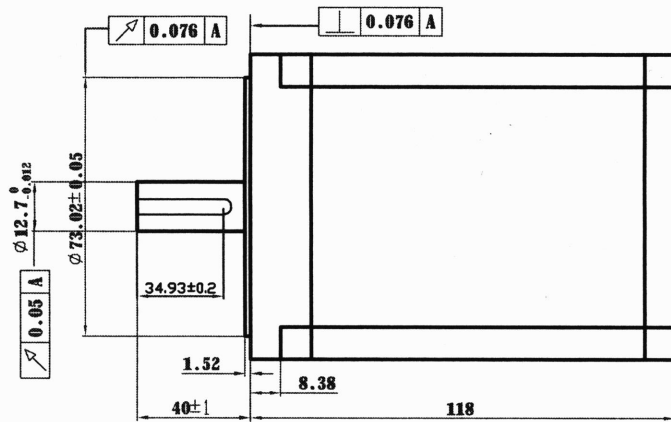
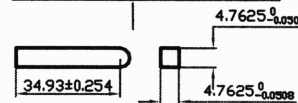


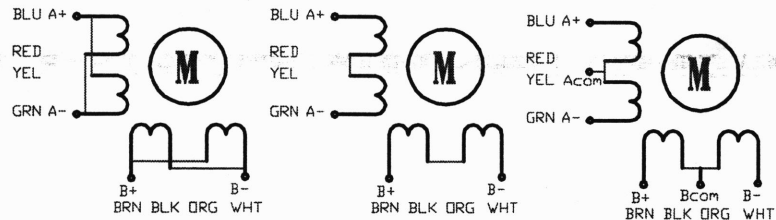
Dimension:



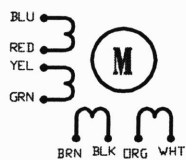
KEY 4.7625*4.7625*34.93



1. Bipolar (parallel) connection 2. Bipolar (series) connection 3. Unipolar connection



Wiring Diagram:



UL1430-AWG20# L=320mm

Specifications:

PHASE	STEP ANGLE	CONNECTION STYLE	CURRENT	RESISTANCE	INDUCTANCE	HOLDING TORQUE	ROTOR INERTIA	WEIGHT
	DEG/STEP		A	ohms	mH	N.m	gcm ²	Kg
4	1.8	parallel	6	0.6	6.5	8.5	2700	3.8
		series	3	2.4	26			
		unipolar	4.2	1.2	6.5	6		

REVISION NO.	DESCRIPTION	DRN	APP'D	DATE	DESIGN	DATE	P/N.	
UNLESS OTHERWISE SPECIFIED TOLERANCES:							TITLE SPECIFICATIONS	
DECIMALS:		MATERIAL		CHECK		USED ON		
.x	±0.5	THIRD ANGLE PROJECTION		SCALE		KL34H2120-42-8A-KEY		
.xx	±0.25					ANGULAR:	DWG NO.	REV
.xxx	±0.1					±0°30'	APPD	
UNIT: mm				SHEET		Automation Technology Inc.		
DO NOT SCALE DRAWING				OF				