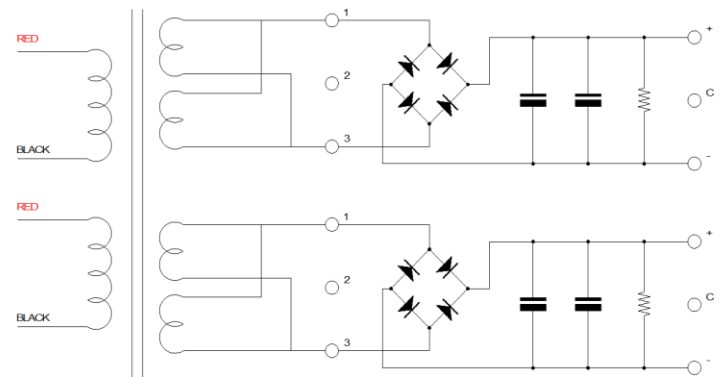
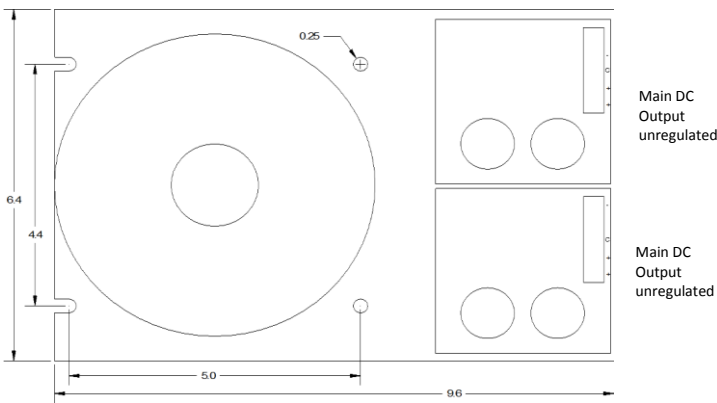


This power supply is designed for used in the step/servo motor drive and high over loaded applications. It will work on both standard 115V and 230V at 50Hz or 60 Hz. This toroidal transformer has heavier gauge wires then the normal requirement to avoid the copper lost during the full load output and over load output.

The power supply has a flexible add on option that allows more outputs as needed. Those isolated output can be used as logic control or encoder power supply. The main output has 2 large capacitors (10000uFx2) to guaranty the output ripple to minimum.

The chassis is made of 3/32" thick aluminum for strength and heat dissipation from rectifier and linear regulators. It will work continuous without any over heat problem.



AC power connections:

115Vac – 2 red wires to neutral & 2 black wires to hot.

220Vac – 1<sup>st</sup> red wire to input, 1<sup>st</sup> black wire to 2<sup>nd</sup> red wire, and 2<sup>nd</sup> black to input.

Voltage output 1	Output current	Voltage ripple	Output 2	Output 3	<b>Test conditions:</b> Input voltage is 120Vac 60 Hz Connect both DC outputs in parallel
73.2V	0A	0			
66.2V	6.6A	0.3Vrms			
63.7V	12.4A	0.6Vrms			
61.1V	18.0A	1.5Vrms			
59.9V	19.9A	1.7Vrms			
-					
-					
-					